

5800

HIGH CONTRAST TEXT, LOGOS AND BARCODES RIGHT CODE ON THE RIGHT CASE

Touch Dry® High Resolution Inkjet Coders

5000 Series high resolution inkjet coders are designed to rapidly fill and jet Touch Dry® hot melt inks which are solvent-free, safe to handle and environmentally friendly. Codes never bleed or fade, dry on contact and are 100% readable. **IntelliWax** printheads combined with our exclusive **IntelliDark** Touch Dry ink produce the darkest, consistently scannable, direct print codes in the industry.

Improved productivity

- **Less Downtime**
The 5000 Series with **IntelliWax** printheads improves productivity by enabling operators to replenish ink without stopping the production line.
- **Designed for efficiency**
Uncomplicated menu structure combined with easy to navigate touch screen user interface results in faster job changes and effortless operation.
- **Less operator intervention**
Our solventless, ink and autopurge technology reduce operator maintenance.



Compact controller box provides smaller footprint without umbilicals

Enhanced performance

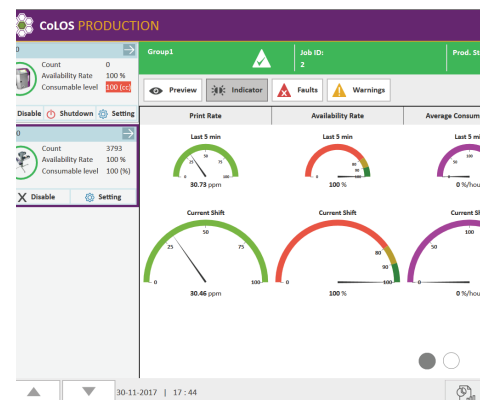
- **GS1-128 codes**
Improve direct print images on corrugate with **IntelliDark** for higher contrast barcodes with improved scannability. Markem-Imaje offers the highest optical density ink to achieve C-grade GS1-128 barcodes.
- **Patented Touch Dry® hot melt inks**
Print on a wide range of substrates and in environments ranging from 0 to 40 °C., a much wider range of inks than competitive printers.
- **High quality codes faster**
Large drop volume at high frequency provides reliable printing at speeds up to 121 meters/minute (barcodes).



Lower your total cost of ownership, TCO, while achieving GS1-128 compliant barcodes

Increased flexibility

- **Easier line integration**
Multiple jetting orientations; single side, opposite side, side (up to 30° tilt angle for inclined conveyors), and top printing and smaller overall footprint.
- **Equipped for your application**
Product configuration options include scanners, cameras, encoders, printhead slide assemblies, and stands.
- **Connect to your ERP**
With CoLOS® software the 5800 can be integrated with production lines, databases, or ERP systems to automatically populate image designs.



Manage and monitor your entire printing operation via a single CoLOS dashboard

5800 - Specifications

Print features

- Printhead dpi
 - Vertical dpi: 200
 - Addressable jets: 256
 - Nozzles: 512

| Print Density | DPI - Ink Drops per Inch | Typical Speed (m/min) | Maximum Speed* (m/min) |
|---------------|--------------------------|-----------------------|------------------------|
| 1 | 150 x 200 | 121.9 | 172 |
| 2 | 300 x 200 | 61 | 86 |
| 3 | 450 x 200 | 40.6 | 57 |
| 4 | 600 x 200 | 30.5 | 43 |
| 5 | 750 x 200 | 24.4 | 34 |

- Print densities available: 1 to 8
- Encoder scaling: Allows for conveyor line speed matching and for higher print speeds with a reduction in the print resolution
- Print area: Maximum/printhead print height: 65 mm (2.56") Print length: 3,000 mm (39.3")
- Print specification: Full true type fonts supported
- Printing of real-time clock (hr/min/sec), dates and auto updating best before dates and serial numbers
- Barcodes (Linear and 2D): ITF, Code 39, Code 128, EAN 128, EAN 8, EAN 13, UPC A, UPC E, Data Matrix, RSS linear, RSS composite, QR, RSS 14, RSS expanded, PDF 417

Operations

- 5800: Up to two printheads or 2 - 5800s in parent-child mode provide up to four printheads
- User interface: Color LCD touch screen used for image selection, variable data entry, diagnostics and system setup.
- Selectable multi-language menus
- Image preview
- Access level password protection
- Full system diagnostic menu
- Printhead orientations: Vertical or up to 30° in process direction
- Software:
 - CoLOS® Create image design software included
 - CoLOS® Create Pro (Optional)
 - CoLOS® Enterprise for networking (Optional)
- Encoder options:
 - Internal: For fixed conveyor speed printing
 - External: For optimizing print quality Recommended for barcode printing
- Photo-edge sensors: Print (trigger) signal and a maximum of two per system
- Software interface:
 - USB for downloading images, settings and data files
 - Ethernet (including web user interface)
 - Communications protocols for PCs, PLCs and packaging machines
 - Compatible with Weihenstephan standard
- Hardware outputs: (3) Fault relay
- Ink replenishment: User prompted to add ink; can be filled without the need to suspend printing
- Interfaces: Hand held product select scanner

Other characteristics

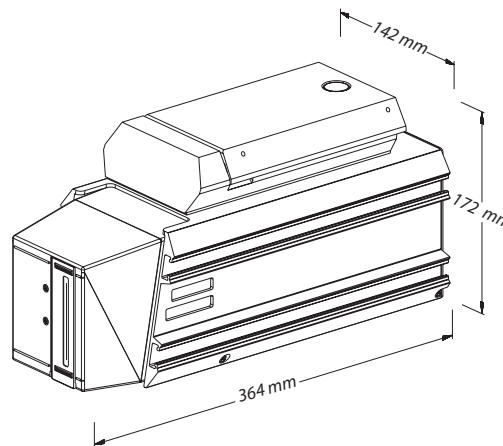
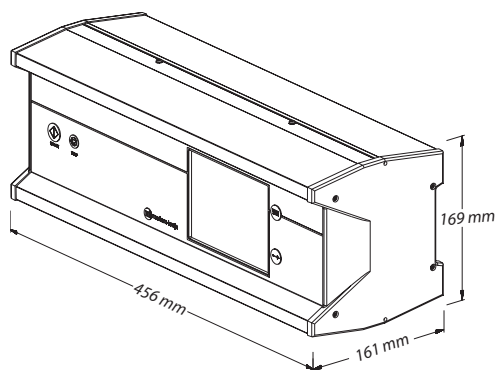
- Weight: Printhead: 7.2 kg Control box: 11.2 k
- Touch Dry® hot melt inks: Available in various series, colors
- Electrical and environmental: 100-240 V, 50-60 Hz.

| System | Measured operating power | Peak power during warm-up |
|---------|--------------------------|---------------------------|
| 1 head | 150 watts | 600 watts |
| 2 heads | 250 watts | 600 watts |
| 3 head | 400 watts | 600 watts |
| 4 heads | 500 watts | 600 watts |

- FCC Part 5 Subpart B, ICES 003; UL STD 62368-1; Certified to CSA STD C22.2 # 62368-1; ETL mark for USA, Canada; CE: EMC directive 2014/30/EU, Machinery directive 2006/42/EC
- Operating environment of 0 to 40 °C (32 to 104 °F). IP42 (controller only)
- Manuals: Instruction manual and CD-ROM User Guide (includes spare parts, options, and accessories catalog)
- Local language versions for the color user interface
- Regional telephone technical and product support,
- Web site technical and product support

Options

- Printhead slide assembly
- Signal tower assembly
- Post print barcode scanner assembly
- TU Look-up assembly
- Optional expansion unit (OEU) - support 11 inputs, 8 outputs and 1 additional scanner port
- Printer service kits
- Preventive maintenance kits and contracts
- On-site product and tech support



We reserve the right to amend the design and/or specifications of our products without notice.
©2019 Markem-Imaje Corporation. All rights reserved

150 Congress Street
Keene, NH 03431
United States of America
Tel: 800-258-5356
Fax: 603-357-1835
100 Chastain Center Blvd
Suite 165
Kennesaw, GA 30144
United States of America
Tel: 770-421-7700
Fax: 770-421-7702


markem·imaje
a  company

To learn more, visit www.markem-imaje.com